

pontnews&views

FREE monthly magazine for Ponteland and district

PONTELAND • MILBOURNE • MEDBURN • PRESTWICK • KIRKLEY

Broadway shopping centre: summer 2009? See page 6



***Dates revealed for
Merton Way revamp
consultation***

***Church thieves thwarted
by passing police patrol***

Glowing report for Pont school

deli@darra

Shop local for all of your fine food Christmas fayre

HAMPERS AND GIFT BOXES

Regional and Christmas selections or create your own from our wide range of fine foods.

FINE CHEESE

Many local varieties, traditional favourites and speciality savoury biscuits to complement.

INDULGENT DESSERTS

Including Coles Luxury Christmas Puddings and the famous Cartmel Sticky Toffee Puddings.

HAND MADE MINCE PIES

Legendary sweet mince pies from Border Home Bake, perfect on their own or warm and add brandy butter.

OPEN 7 DAYS

Deli at Darras, 13 Broadway, Darras Hall Tel. (01661) 860206

Now Open: Deli at Whitley Bay, 195 Park View, Whitley Bay

Tel. (0191) 280 7914

www.deli-at.co.uk

f FLOATARIA
Therapy, Relaxation & Body Massage

Hey...
R u gonna' take the hint?

Want your skin to feel good looking - that's what someone would say for the gift of relaxation with Floataria Spa Therapy. And if you can't decide what to get your other, then why not give them a course of over 20 relaxing, relaxing and relaxing treatments with their gift vouchers and for the whole of the month of December?

Floataria Spa Therapy. Relaxation & Body Massage offers a range of treatments that will satisfy the most demanding of companies, including full and half day spa packages, which include a relaxing 150 minute custom lunch at the luxury top star Vantage Hotel.

Whether it's a company you are looking for or a holiday for your family, Floataria offers a wide and varied selection of spa treatments.

There are also special offers for the Christmas season - including Christmas gift boxes, including 10 or 20 treatments. It can be put on any of your ways to get the best of quality, expert spa treatments.

For all the information on the services and the results, visit our website at www.floataria.com or call us on 0191 222 0600. We are open 7 days a week.

0191 222 0 600

NATIONWIDE DOCUMENT STORAGE SERVICE



Storage and Management Services

Nationwide Coverage

Advanced barcode and scanning system.

BOX-IT NORTH

We cover the North East Area (based just out of Ponteland)



Call Peter Riley on 07773795810

Call free on 0800 22 0707

EMAIL: enquiries@boxit-north.co.uk

AUTOMATED GATE SYSTEMS

20 Years experience in the wrought iron trade. Full measuring design, manufacture & installation.

- Floor Mounted & Sliding Gates
- Hard Wood & Soft Wood Gates
- Swing Gate Openers
- Intercom door Entry Systems
- Access Control Equipment
- Painting, Blasting, Galvanising



GATELAND NORTH EAST LTD

Manufacturers of all types of wrought iron gates & railings. For further information and no obligation quote. Call or visit our automated showroom.

Tel: 0191 264 2519

Mobile: 07765 864 888

Unit 3 Gradys Yard, Ponteland Road, Throckley, Newcastle upon Tyne NE15 9EP



Alice Bell with her winning poster



Alice wins peace poster prize

By Muriel Sobo

The Lions Clubs worldwide have been running their annual Peace Poster competition and once again Ponteland Middle School put in a very good entry encouraged by their art teacher Liz MacWhinney.

Pictured (left to right) are: the winner Alice Bell, second placed Beth Forsyth and third placed Laura Jackson with Liz MacWhinney. The girls were all presented with cash vouchers by Lion President Jim Robertson.



Why change to a Town Council?

By Coun Robin Ramsay
Chairman, Ponteland Parish Council

Under reorganisation, Ponteland will be in an area with several Town Councils - Prudhoe, Hexham, Morpeth and Haltwhistle - and fits into such grouping in respect of size and needs.

In many strategic documents and discussions there is uncertainty as to how to describe Ponteland. Terms such as service centre, township, commuter belt or even a dormitory suburb have been used. This change will help to clarify understanding of Ponteland and its needs.

Under the reorganisation scheme, Ponteland and local county councillors will be elected representatives on the area committees. This will involve partnership working with both elected and non-elected representatives.

Proper recognition is required for the implicit authority of democratically elected bodies and re-designation should help.

There is currently no provision for a Mayor but changes could be made if one was considered helpful or necessary.

Since the legal standing of Parish and Town councils are the same, the process involves no other bodies and costs of changing are negligible.

This will not impose any increased responsibilities nor alter the general approach to budgeting, which is to provide appropriate services and facilities without excessive financial demands.

The existing levy of under £35 per Band D household is below the average for Town and Parish Councils in Castle Morpeth Borough.

The designation as a Parish Council has been of long standing - since 1894 - but, in a vastly changed society, it is important that we have the same status as other towns in Northumberland.

This change will help to ensure that Ponteland has a clear identity and is supported as a thriving and significant town in Northumberland.

The Council is minded to change its designation to Town Council, commends this proposal and welcomes comments on it.

What do you think?



Liz is pictured in the 'park' in 1964

Before the park...

By Muriel Sobo

The parish bought land owned by Miss Smith in 1965. Miss Smith ran the Dairy Café off the West Road, grew many plants and shrubs in her gardens and owned a selection of buildings which housed cows and horses.

Plans had been put forward for the development of a park by 1960. Between these dates some village children enjoyed the space and freedom to keep and ride ponies.

Where do all the seaside ponies go in winter? Liz Thompson, now Scott-Batey, and her brother, each looked after a beach pony over the winter. They used some of the sheds still standing as stables, learnt to ride and jump and generally enjoyed themselves.

Soon Liz had her own pony, Patch, and now paid 5/- to graze it in the field which stretched from the Scout hut down to Darras Road.

She remembers the formidable Miss Smith but Liz and her friends had an idyllic period of teenage freedom with their ponies where the Park was later developed.

Liz still walks through the Park everyday and is enthusiastic about the changes taking place. It is still a place for young ones to enjoy and now wheel chair users and carers are also full of praise about the latest improvements that allow them access.

Cricket Club wins national accreditation

By Ian Wardle
Cricket Development Manager
Northumberland Cricket Board

Ponteland Cricket Club has been celebrating the recent award of Clubmark Accreditation through Sport England and the England & Wales Cricket Board.

Managed locally in partnership with Northumberland Cricket Board, Clubmark has helped the club to develop a vibrant and healthy cricket infrastructure while demonstrating commitment to high quality provision through the production of a Club Development Plan.

The club demonstrated implementation across four themes: Duty of Care and Safeguarding Children; Cricket Programmes; Sports Equity; and Ethics and Club Management.



Congratulations go to volunteers at the club who have worked so hard to achieve accreditation.

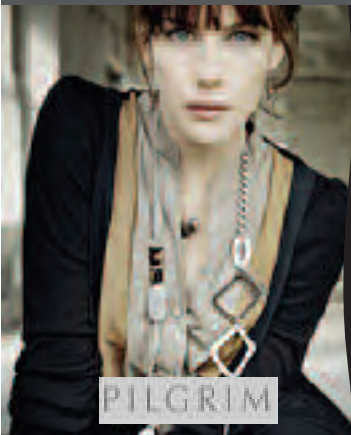
It will be a busy summer ahead for the club, which will be delivering the Chance to Shine initiative in 2008. In addition, a new two bay artificial practice area will be ready for use in the new season.

Pictured are Club Chairman and Junior Organiser Andrew Morgan, Treasurer and Child Welfare Officer Peter Sowler, Club Coaches Phil Hall and Richard Hopper as well as junior players Robert Hall and Ashley Parker

Cards
Gifts

Carousel Jewellery

31 The Broadway, Darras Hall Telephone: (01661) 824187



LATE NIGHT OPENING EVERY THURSDAY IN DECEMBER, TILL 7.00p m

Ideal for that perfect Christmas gift or treat! With NEW Pandora Charms

JEWELLERY • PANDORA • HANDBAGS GIFTS • NOUGAT
CRABTREE & EVELYN • STATIONERY • YANKEE CANDLES • BALLOONS • TOYS



Ponteland village centre looks more colourful than ever this year, after the Parish Council agreed to spend £4,000 on Christmas lighting. The displays have been fitted by Northumberland County Council.

Broadway **regeneration plans** gain support

By Raman Sehgal, for Zara Commercial

Developers say they have received a favourable response to plans for a major revamp of Darras Hall's Broadway shopping centre.

A public consultation event held at the Memorial Hall last week attracted a great deal of interest as residents and retailers gathered to see plans and respond with their views on the proposed scheme.

Feedback received included comments such as "a huge improvement" "it's about time" and "a positive scheme". An issue was raised regarding the potential maintenance of the flat roof, along with the need to use quality materials to achieve long term durability.

Kevin Liu, owner of the Rendezvous restaurant on Broadway, said: "We are very excited by the proposal as the upgrading of the entire site will create a much more desirable shopping and dining environment for residents in the area. The plans also tackle a lot of the issues we've had to face

over many years."

Sunil Mehra, director at property investment company Zara Commercial, said: "A lot of time and effort has gone into this scheme, so naturally we are delighted the local community is looking forward to seeing the improvements implemented. We will continue consulting with the relevant bodies and are certain we can restore Broadway into something that everyone involved will be proud of."

Zara Commercial has been liaising with Castle Morpeth Borough Council, Ponteland Parish Council, Darras Hall Estates Committee and the site's existing commercial tenants on developing the regeneration plans.

Originally built in the 1960s, the appearance of Broadway has become increasingly outdated and inadequate amid huge investment and development in the surrounding area. The tired-looking Broadway has also suffered from increasing maintenance issues including flooding, as well as vandalism.

Ces Madison, director of design at Purves

Ash architects, which has developed the proposal, said: "The new plans will not only result in an aesthetic improvement for the Broadway site, but will also lead to a number of practical benefits including improved amenity, better lighting and a safer shopping environment.

"The restoration proposals have been deliberately designed to also actively discourage the anti-social behaviour that Broadway has suffered in recent years."

The new plans, designed to blend in with the neighbouring environment, are not expected to result in any costs to the local community or the commercial tenants. If approved, the new Broadway is expected to be complete in autumn 2009.

Cover: a visual showing how the Broadway shopping centre could look in 2009



What do you think?



Letters on all issues are welcomed by *Pont News & Views*. The Editor reserves the right to amend any submitted letters published, for legal or other reasons. All letters submitted should include the writer's name and address, even if they wish it to be withheld from publication.

Your letters... Local skips greener than driving to the tip

Paying considerable amounts of Council Tax, I was upset to be told I could not put garden waste into the Black Bin.

Being almost 80, it is just one more problem to overcome. I do not have a Green Bin, because I refuse to pay on principal for a collection, which I previously had: i.e. a weekly collection.

I realise you can buy biodegradable bags, but these are very flimsy, and can create a mess if they

collapse, and in any case are not suitable for heavy pieces of waste.

The alternative is to get the car out and go to the amenity tip - nine mile return journey on a cold engine - you could not get a worse scenario for creating CO2.

On a recent trip I counted 10 cars between the main road and the tip - remember this most likely goes on all day, which I consider ridiculous.

In other parts of the country skips are delivered to central, convenient locations, on certain weekends each month to overcome the problem of pollution.

I appreciate these would need to be supervised, but possibly the tip itself could be closed on these occasions.

I find it interesting that the Council is claiming credit for recycling levels, but what about the poor person who is reporting on CO2 levels!

But this is typical of statistics.

Maurice Hall
Sandringham Way
Ponteland



What do you think?

January deadlines

The January issue is being delivered the week beginning January 21. Deadline for all copy and adverts is Monday January 7.

Fantastic flooring with walls to match



We've been covering your floors for over 50 years ... and now we'll help with your walls too! Our brand-new extensive picture range is sure to add style to any home. Call in now and see for yourself.



est. 1957

bonner & white

CARPET AND FLOORING SPECIALISTS

50 Merton Way, Ponteland, Newcastle upon Tyne, NE20 9PS

50 YEARS successfully serving the discerning customers of Darras Hall and Ponteland.

50 YEARS of flooring experience and knowledge, allowing us to source a fantastic range of products and negotiate the best deals for our customers.

50 YEARS of dedication, pride and customer care that only a family-run business can provide.



Fantastic range, great prices, unrivalled experience – why shop anywhere else?



Church lead thieves thwarted by passing patrol

Underage drinking warning

By PC Jon Gray, Community Beat Officer, Ponteland



Since the last column was written, we've had 24 crimes reported to us in Ponteland and the surrounding area.

Thankfully, none fall into what would be described as the serious category. But, that said, the annoyance and distress caused to the injured parties is never underestimated by ourselves.

Offences that can be mentioned have included the theft of a motor vehicle from the car park of the Highlander pub near Belsay and a vehicle cage trailer from an address in Darras Hall, both offences taking place over weekday nights.

Two shop premises in Ponteland had windows damaged, one other shop had shutters damaged, during the late weekend evening nights/early mornings. Three youths are under investigation for the damage offences.

The dry run of house burglaries continues, three months now since we had one, but garages and sheds are still targeted. In one instance, a large amount of car mechanic tools were taken from a house in Darras. Please try to fit good alarm systems to your sheds/garages.

Church lead thieves thwarted

As many readers will know, the price of scrap metal has risen sharply - some experienced thieves are moving back into this line. The roof of St. Mary's church was badly damaged at around 1am during a late November morning by thieves trying to take the lead, who were disturbed by Pc Wittland from the motor patrols dept. who was alerted by strange noises from the centre of Ponteland. All the lead was

recovered, so the thieves were frustrated, their efforts amounting to nothing.

Retail crime, (plain English - thefts from shops/shoplifting) has also remained low. A juvenile offender was caught stealing sweets from Somerfield - remember, it's not the value of what is taken, the important issue is that of something very valuable, integrity.

An experienced shoplifter from the East of the county was caught after his partner drew the suspicions of the passing officer by her bad parking some weeks ago. They have not been back since.

One assault was reported late on a Friday November evening, on the main street, Ponteland. This one is under investigation, information has come in.

Patrols have increased here and at Morpeth over the weekend nights, as, well it's pretty obvious people do tend to drink even more than ever over the coming holiday period.

Underage drinking warning

Parents who think it's OK for their children to drink in the street may like to be made aware that there are new 'Alcohol Related Dispersal Orders' that can be issued to people over 16 who are involved in drinking and causing disorder. This means that they would be obliged to leave the area for a specific time, and possibly be detained if they were caught breaching the order.

Note that it is 16 and over, which means that the orders could go to older people, a significant number of whom, in this country, do set a fine example to the younger folks when it comes to drinking.

On the same theme, people will be aware that an anti drink/drive campaign is currently on the go. During the last week in November and the first week in December two men have been detained under drink/drive legislation already in this area.

Retirement beckons...

Finally, the end of another year approaches, the new year arrives and beckons towards what will be most likely the end of the author's career, as 2008 advances. (As a colleague put it: "Like the evening Sun casting its lowering rays over the drab Sutherland peat moors of a long and somewhat undistinguished career.") Very kind of him.

Similar to a senior ranked officer, who has long since left this force, telling the author on an annual appraisal: "Well Jon, isn't it fair to say that you'll never be a high flyer?" Well, to put it coldly, he was correct. I would again emphasise that he left this area years ago, very few people reading would probably remember him, I'm not sure if he made ACPO rank, I hope that he did, as the rest of the appraisal was OK and we did remain friends.

No, the organisation is used to "corps criticism", and those within it should be used to personal criticism. That said, one of the main things that the author has picked up over the years is that before making critical comments, it is better to research the subjects as best you can.

In view of the above comments, let's pick up on some recent local critical comments - sirens. Yes, we do use them from time to time, when responding to what are called "high level response" calls. Sometimes, they are used for advanced

training, but this is more the exception than the rule.

It is usually the Police who will be first at the scene to the serious collisions that happen on our outlying roads. In recent months, at least one person was saved from more serious injury by an officer getting to the scene at "double time". The duties will be primary first aid, secure the scene until help arrives, in the form of the other emergency services, and the accident investigation unit who, speeders be advised, can build up a remarkably accurate picture of what happened, provided that the scene is sealed off.

Other incidents, I'm afraid, do require an urgent response - thankfully not every day, but these things do happen and we do have to cross county or borough boundaries to assist colleagues if things are really bad. No, they are not used to get back to base stations to finish on time, etc.

Highland pipes to replace police sirens?

The author would personally prefer the sirens replaced - Highland pipe music would sound a lot better - tunes such as the K.O.S.B., "The Standard On The Braes Of Mar" or the Argyll's "Monymusk", may not generate negative comments, or perhaps the highly appropriate "Faugh A'ballgh" (Clear The Way) could be used. May send it to the suggestion scheme office.

Very finally, best wishes to all readers over the Christmas and New Year holiday - keep reporting things, keep safe.



Continental market a BIG HIT

Organisers of October's Continental market held at the Memorial Hall car park say they hope to return to Ponteland next year.

Traders from across Europe selling everything from soap to saucissons had a busy day in the autumn sunshine on Sunday October 21.

Organiser Olivier Simonin said: "It was a short market, finishing at around 3pm, but we had good customers. I think we will be returning in May next year."

New man behind the bar at Memorial Hall

By David Cobb, Honorary Treasurer, Ponteland Memorial Hall

Following the recent refurbishment of the Ponteland Memorial Hall kitchen, further important changes are planned.

Following the retirement of the current Licence holder Geoff Orde, the bar will now be managed by Ponteland resident Miv Singh Chahal.

Miv's current business interests include The Corner Cafe in Prudhoe, and he can offer a comprehensive range of catering packages for bookings varying from light snacks to formal dinners.

The main hall has a capacity of over 300 and smaller rooms. They suit a wide range of activities, including weddings, birthday parties and social and fundraising functions and funerals. The Hall is also the base for a number of local groups.

Further information can be obtained at www.pontelandmemhall.co.uk or by email at infpmh@yahoo.co.uk or by ringing (01661) 822603 on Monday and Friday from 2pm-4pm and Tuesday 10am-12noon.



Scouts help create Young People's Wood in park

By Coral Wilmot

A band of stalwart cubs, beavers and scouts and young friends, accompanied by mums and dads, turned up to help with the planting of some 150 shrubs in this area.

After a quick demonstration by Sue Duncan, Vice Chairman of Friends of Ponteland Park, on the correct method of planting the youngsters set about the task of creating the shrub under-storey for their wood.

Some 30 young people turned out and within an hour the job was done. Congratulations to all who helped.

Look out for more colour in the park in the Spring.

Children from our local First School came along and planted 500 'Daffs for Dads' beside the Memorial Hall Car Park and Friends of Ponteland Park have planted some 3,000 more bulbs - crocuses, specie daffodils and bluebells.

Church noticeboard

Churches Together in Ponteland

The Churches in Ponteland extend a warm welcome to everyone to join them for 'Carols on the Green' at 7pm on **Wednesday 19th December**. We will meet on the Green, outside St. Mary's Church, to sing Christmas Carols together, and then make our way to St. Mary's Church Hall for coffee. All are welcome to join us - please bring a torch with you! **The Revd. Ian Suttie**

Ponteland Methodist Church

The members and friends of Ponteland Methodist Church are busy preparing for their Christmas Services, and extend a warm invitation to all members of the community to join them. Our informal, Café-style, family-friendly Carol Service will be held at 4pm on **Sunday 16th December**. The service of Carols and Lessons, with special Christmas music by the Church Choir, will take place at 6.30pm on **Sunday 23rd December**, and will be followed by coffee and mince-pies. On Christmas Eve there will be a service of Holy Communion at 11.30pm and on Christmas Day at 10am there will be a Family Service for Christmas Morning. Every one is welcome!

Carol singing

Carol singing for Christian Aid will take place as is customary at Somerfields and Broadway, Darras Hall, from 10.30am to 12noon on **Saturday 22nd December**. If you would like to join in, you would be most welcome.

Panache

Ladies Fashion and Accessories

For a perfect winter wardrobe...



Thanks to all who supported our fashion show, which was a huge success

...visit Panache

Mon - Fri 9.30-5.00 Sat - 9.30-4.00

34 Merton Road, Ponteland. Tel: 01661 824100. email: panacheponteland@hotmail.co.uk



Mr and Mrs Porter are pictured with Chief Archivist Sue Wood.

One of the archived photos of Milbourne Church

Record deposit for Milbourne

By Muriel Sobo

Historical records of Holy Saviour Church at Milbourne, a chapel-of ease for Ponteland, were deposited recently in the County Archives at Woodhorn.

There were over 100 letters and papers relating to the years of building and dedication from 1867 to 1871 which had been filed in sequence and indexed by Godfrey Roberts, a previous member of the church but now deceased.

He had also compiled a photo album detailing many of the architectural features and points of interest of the church. Godfrey worked as a land surveyor, lived in Darras Hall and had friends who worshipped at Milbourne where he acted as an unofficial secretary to the church.

He also completed a graveyard survey with pictures and inscriptions of every grave.

These meticulously kept files were all deposited by Mrs Wendy Porter when she met the chief county archivist, Sue Wood, at Woodhorn.

Mrs Porter, baptized Violet Anne Bates, is a member of the Mortimer family who lived at Milbourne Hall and a descendant of the Bates family who built Milbourne

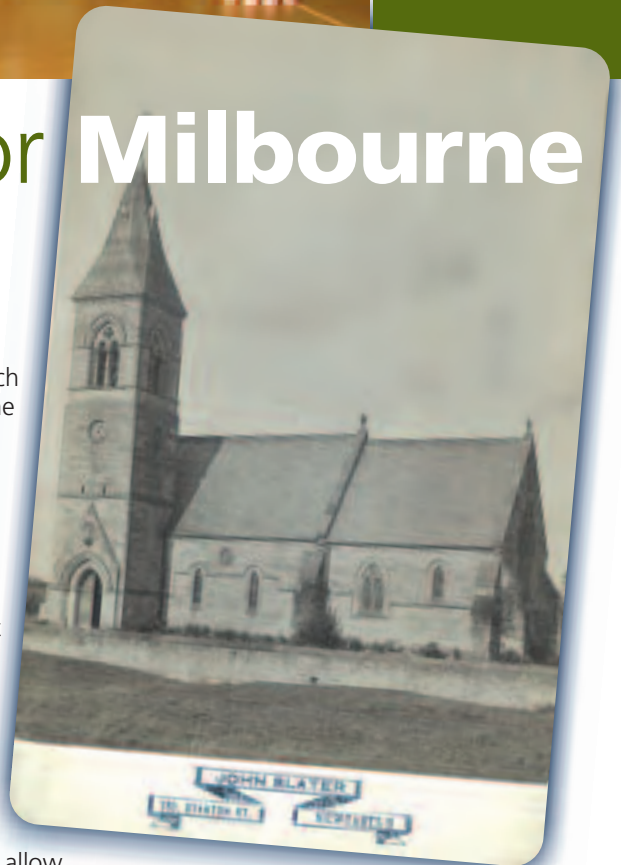
Hall in the first decade of the 19th century.

The funds for building the church were donated by Miss Jane Anne Bates and the building is dated to 1869. Mrs Porter is very knowledgeable about the church and her husband Henry was a churchwarden for many years.

Their meeting with the Archivist was enlightening as she explained how the documents would be catalogued, digitally copied where appropriate and then available through the internet to all computer users. Funding has purchased state-of-the-art scanners and printers allow staff to copy maps and plans and also funds workers to develop the project.

This was followed by a look into a strong room, one of many, which is a controlled environment where millions of documents are stored and conserved. It was a fascinating insight into the back rooms of the Archives.

Anyone with an interest or family connection to Milbourne will be able to see these items by visiting the Archives at Woodhorn. They are open to members of



the public, but please check opening times before going.

It is one year since the multi-million pound Museum and Archives were opened on the site of the Woodhorn Colliery near Ashington and there are many displays charting the unique mining story and heritage of Northumberland. The baptisms, marriages and burials for Milbourne are listed in the Ponteland registers and these too are available at Woodhorn.

wins Pont school computers accolade

A Ponteland school has been given a glowing report by Government inspectors for the "outstanding" way it teaches its 600 students how to make use of computers.

The rarely-given accolade comes in an Ofsted report following an inspection of Information and Communication Technology (ICT) teaching at Ponteland Middle School.

It said the nine to 13-year-olds followed an exceptional study scheme, and that all lessons observed were good - most with outstanding features. And it added: "The overall effectiveness of ICT was judged to be outstanding."

Delighted head teacher Dr Caroline Pryer said: "Schools seldom receive such an overwhelmingly positive report for their ICT teaching, and we are very proud indeed to have done so.

"ICT is a skill of critical importance in today's world and we have attracted to the school quite exceptional staff who not only teach it as a subject in its own right but make sure it becomes a natural part of the teaching in all subject areas.

"The inspector was highly complimentary about the way students use ICT in all their lessons and that is no accident - it is the result of careful planning and design of our ICT teaching."

The report said students join the school with average ICT skills but by the time they leave they are well above the national average.

"The ICT subject leader has extensive knowledge of her subject and uses this effectively to support staff across the school . . . In all the lessons observed the pupils behaved well and showed high levels of motivation and enthusiasm for their work in ICT."

It added: "The quality of the ICT curriculum is outstanding. The ICT scheme of work is exceptionally well designed."



hb opticians Ltd
HEALTH FASHION PROFESSIONALS
and Hearing Care

SIGHT AND SOUND IT MAKES SENSE!

We are delighted to announce the availability of an independent hearing care service at HB opticians.

Gary Holland, owner of The Hearing Care Centre, is now offering regular sessions at our practice. A full hearing assessment takes around 1½ hours, costs £25.00, and is completely without obligation. If you can be helped with hearing aids then these are provided on a 39 day trial period prior to purchase, to ensure that you are happy with your decision. Don't take chances with your hearing, when the best professional advice is available on your doorstep. Contact us today for more information or to schedule your appointment.

Contact us at hb opticians
01661 820008
29 Broadway, Darras Hall, Ponteland

PETER ATKINSON

Conservative MP for Hexham



Constituency Office:
1 Meal Market
Hexham
Northumberland
NE46 1NF
Tel: 01434 603954
Fax: 01434 601659

Westminster Office:
House of Commons
Westminster
London
SW1A 0AA
Tel: 0207 2194013
Fax: 0207 2192775
Web: www.peteratkinson.com

If there is an issue you are concerned about please do not hesitate to contact me. I hold constituency surgeries in Ponteland and can also be contacted through my Westminster or Constituency offices. Alternatively you can keep up to date with my latest news and send me a message by logging on to www.peteratkinson.com.

WORKING FOR YOU www.peteratkinson.com

Update from



By Raymond Sproul

Having obtained the approval of the Local Strategic Partnership at their last meeting, we are pleased to announce details of the public consultation for the village regeneration draft design brief.

This will give the people of Ponteland the opportunity to comment on the Brief that has been produced and presented by Ponteland Community Partnership.

These are as follows:

Tuesday 8th January - Ponteland United Reform Church, Darras Hall - 10am-1pm & 3pm-7pm

Wednesday 9th January - CIU Club, Ponteland - 10am-1pm & 3pm-7pm

Thursday 10th January to Thursday 17th January - the displays only will be at Merton Hall 9.30am-11.30am

Friday 18th January - Memorial Hall, Ponteland - 10am-1pm & 3pm-7pm

Saturday 19th January - Memorial Hall Ponteland - 10am-2pm.

Comment sheets will be available at each of the venues and these can be handed in at the venue or sent to the Vergers Cottage and these will be collected on the 1st February 2008.

Members of the Regeneration sub-group will be on hand at the United Reform Church and the Memorial Hall to answer your queries. There are also reference copies of the Brief available in the library, Verger's Cottage and with all societies represented on the Community Partnership. The document can also be viewed at www.pontelandonline.co.uk

Public Meeting

A Public Meeting will be held on Thursday 28th February 2008 at 7pm at the Memorial Hall by which time the comments received, will have been collated and a presentation will be developed which captures the submitted feelings about the Brief.

Treasurer hunt

The Partnership is looking to appoint a new treasurer.

The postholder would deal with all accounts, including Pont News & Views.

For more information, please contact Chairman Brian Prickett at brpandajp@talktalk.net or by calling (01661) 825129.

Pont firm celebrates 50th Anniversary

By Muriel Sobo

Contractors and builders Kendall Cross are celebrating their 50th anniversary.

John Nelson, William Bissett and George Bosomworth founded the company in 1957 at the Old Mill, off the West Road, where there was a piggery as well as some surrounding land.

The mill was originally built to work with water from the Pont and used to grind corn. It had however been home to a number of Ponteland families after it was stripped of its machinery long ago.

The piggery went, the mill was extended and car parking provided. So why was it called Kendall Cross? One of the founders,



John Nelson, married a lady called Beryl Kendall Cross and the firm borrowed its name from her! George Bosomworth recalls watching kingfishers on the Pont from the upper offices in the early days.

Today, 50 years on, the firm is involved in both housing and commercial work from north of the Tyne down to the Tees worth tens of millions of pounds.

They are proud of their partnerships with local authorities and private clients, which brings a repeat workload of up to 85% based both on their strong reputation and their consistent track record.

Two of their current projects are the £1m refurbishment of Monkwearmouth Station in Sunderland and new student accommodation at Stepney Lane, Newcastle.

One of their award winning projects was the Ouseburn Farm in Byker. The firm's staff pride themselves on compliance with the latest environmental standards in all aspects of their work and they have many long-serving employees from a workforce of about 125 people.

Latest NEWS from Ponteland Parish Council



This report is based on the minutes of the Parish Council's meeting on November 8

PRESENTATION BY YOUTH TEAM – PONTELAND HIGH SCHOOL

Mr McCready thanked Councillors for the invitation to attend the meeting and took the opportunity to thank the Parish Council for their grant towards the cost of the Youth building. He explained that the project had hit unexpected problems with the electricity supply that was probably going to cost an additional £20,000. It was proposed that the facility would be open 3 or 4 nights a week and would close no later than 9.30pm. It would be well supervised and organised. Information was distributed to Councillors regarding the Youth centre provision and also a report on the Detached Youth work carried out in Ponteland. Comment was made at the difference between the number of males being engaged by the

Youth Workers compared to females and it was pointed out that was largely due to safety issues and young women not feeling comfortable with a male dominated presence. It was hoped that more young women would be encouraged to attend the Youth Centre when it became operational. The issue of youths congregating in the Callerton Lane Play Area was raised. It appeared that this area was often used by youths who were breaking glass etc and it was asked if this could be raised by the youth workers as this created a real safety issue for children using the facility. The youth team were thanked for their attendance.

GRANT APPLICATION – PONTELAND MEMORIAL HALL

A grant application had been received from the Memorial Hall

requesting a grant towards general running costs. A grant of £5,150 was approved.

PONTELAND PARISH – RE-DESIGNATION AS A TOWN COUNCIL

A report relating to the possible re-designation of Ponteland Parish as a Town Council had been circulated. The reasons for this suggestion related mainly to the creation of the new unitary authority for the County and the fact that the characteristic community proposed for Ponteland included a number of Town Councils. Ponteland was of a similar or larger size to these Councils and it was important that Ponteland be given equal consideration with these areas. As Ponteland Parish was already registered as a Quality Council, re-designation as a Town Council would provide a basis

for seeking delegated responsibilities from the new unitary authority. The costs involved would be negligible involving only the production of new letterheads and advising relevant bodies of the change in designation. It was proposed that a public consultation exercise be carried out in respect of this proposal including the publication of an article in *Pont News & Views* and also seeking the views of the Ponteland Partnership and the Civic Society.

AUDIT FOR YEAR ENDED 31.3.07 – EXTERNAL AUDITOR'S REPORT

A copy of the report from the External Auditors on the Annual Return had been circulated to the Council. There were no matters of concern raised.

bowson barbers

PRIZE DRAWN MID-DAY
24th DEC 2007

Free Christmas Prize Draw

WIN A MOUNTAIN BIKE

MAIN ST

BELL VILLAS

METHUEN CHURCH

DIAMOND PUB

KEITH PATINSON

bowson barbers

BOTTOMS UP

To enter simply call at Bowson Barbers and present this advertisement with your name, address and telephone number at the bottom.

Monday/Tuesday / Wednesday
9.00am - 5.30 pm
Thursday/Friday

Name _____

Address _____

Tel _____

Smithy Side, 7 Bell Villas, Ponteland Tel: _____

Looking for a way out?

- DIVORCE
- CHILD MAINTENANCE
- COHABITATION
- CHILDREN
- FINANCES
- DOMESTIC VIOLENCE
- CIVIL PARTNERSHIPS

FREE
INTRODUCTORY CONSULTATION

Colette Stroud Solicitors

FAMILY LAW SPECIALISTS

For a more personal guide through the legal maze

T. 01661 820 444

Apocry House, Meadowfield, Ponteland NE20 9BB
www.cs-solicitors.co.uk
Email: colette.stroud@cs-solicitors.co.uk

WORKING WITH THE COMMUNITY FOR A BETTER FUTURE

Be sure of your insurance

At this time of year many of us may be thinking about clearing out the garage to store those seasonal items, such as outdoor furniture, until they are needed next year. In fact many of us may use our garage to store items that won't fit in our homes, rather than to park the car.

Figures from Legal & General calculate that the average garage holds around £6,500 of garden and household items, such as outdoor chairs and table (£500), unused furniture (£1,000), camping equipment (£500) and golf or sports equipment (£750).

Your Newcastle Building Society branch manager in Ponteland, Sandra Smith, is keen to remind

customers to check the value of their garage contents. Household insurance from Newcastle Building Society will cover the contents in your garage, or domestic outbuilding, with a limit of 10% of the contents sum insured for theft or attempted theft. So, for example, if the current level of contents cover is £60,000 then items stored in the garage would be covered for theft

up to £6,000. Cover in excess of this 10% level will be considered, subject to security and an increase in premium.

Sandra says: "Garages and outbuildings are great for storing items but it is vital to check that house insurance provides adequate cover for your belongings. Household insurance does not cover for theft or damage to cars or motorised vehicles stored in the garage and these should be insured separately. Given that those other items may increase in value it is also worth checking that the garage is secure with additional preventative measures in place such as security lights and good quality locks to deter any opportunistic thieves."

Call into your local Ponteland branch to discuss your insurance and financial needs, or call 01661 821 828 today.

Home Insurance

10% extra cover at no extra cost.

For one month before and one month after Christmas your contents sum insured is automatically increased by 10%†



Call: Ponteland branch on **01661 821 828**

Click: www.newcastle.co.uk

Come in: to Ponteland branch, 23 Broadway, Darras Hall.



*When you take out Buildings and Contents Insurance, available to new customers not currently holding insurance with Legal & General or arranged by the Newcastle. This applies in your first year of cover only. This is a limited offer and may be withdrawn at any time. †Applies to home contents cover only. Terms & Conditions apply. Buildings and Contents Insurance is arranged by Newcastle Building Society and underwritten by Legal & General Insurance Limited. Principal Office: Portland House, New Bridge Street, Newcastle upon Tyne NE1 8AL. Telephone: (0191) 244 2000. Newcastle Building Society is authorised and regulated by the Financial Services Authority (FSA) and is entered in the FSA's register under number 156058. We are permitted to advise on, arrange and administer general insurance. You can check this on the FSA's register by visiting the FSA's website www.fsa.gov.uk/register/ or by contacting the FSA on 0845 606 1234. Details are correct as at time of print (November 2007).

